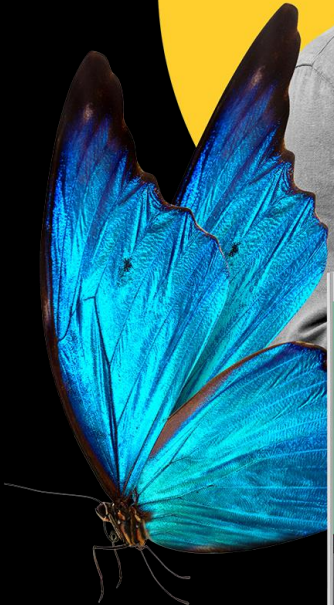
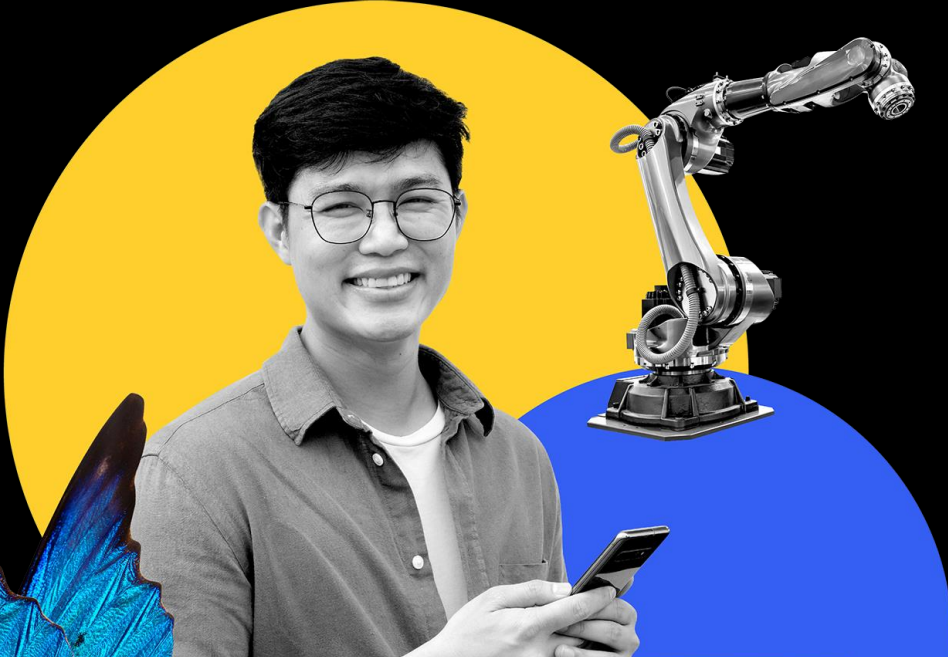


SMETA Update

October 2023



The screenshot displays a report page with two columns. The left column, titled 'EXECUTIVE SUMMARY', features a green background and contains three icons: a circular arrow for 'ROI 139%', a bar chart for 'BENEFITS PV \$686K', and another bar chart for 'NPV \$399K'. Below these is a section for 'Benefits (Three-Year)' with a bar chart showing a value of \$20.3K. A quote from an associate engineer at an electric utility is also present: "We're able to use all sorts of different data that we didn't use before, and now we have the ability to put it on the wall however we see fit." The right column, titled 'EXECUTIVE SUMMARY', contains text under the heading 'TES FRAMEWORK AND METHODOLOGY' and a list of numbered items: 1. DUE DILIGENCE, 2. DECISION MATRIX INTERVIEWS, 3. COMPOSITE ORGANIZATION, 4. FINANCIAL MODEL FRAMEWORK, and 5. CASE STUDY. The page number '4' is visible in the bottom right corner.

Recap from October meeting

Observations

- **Recap:**
 - Unreliable data, inconsistent application, quality issues
 - Conflicting advice on best next steps actions – management systems assessment
- **Sedex decision:**
 - Remove Observations

Recap from October meeting

Collaborative Action

- **Recap:**
 - New type of NC necessitating long-term closure plan
 - Queries of how to handle long-term 'Open' status
- **Sedex decision:**
 - New status: 'In Progress'
 - Space for suppliers to upload an action plan

Update – Living wage

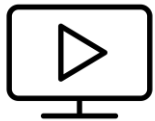
- Living Wage ‘Collaborative Action Required’ Workplace Requirements make it clear the expectations from Sedex regarding a site’s responsibility to work toward paying a living wage.
- Majority of WRs under ‘Living Wages are Paid’ actually relate to legal or minimum wages.
 - Concerns raised that compliance with these WRs suggests compliance with Living Wage
- **Sedex Decision:**
 - Split ‘Base Code 5: Living Wages are Paid’ into two Code Areas:
 - 5: Legal Wages are Paid
 - 5.A: Living Wages are Paid
 - Allows a site to evidence its compliance with legal and minimum wages, whilst also assessing their work to achieve Living Wage

Training Update

Activity	September	October	November	December	January	February	March	April
Collaborative Training – Audit firms	SMETA Collaborative Training							
SMETA Auditor Academy – Auditors	SMETA Auditor Academy development					Auditors complete the SMETA Auditor Academy		
Members training					Members live training			
					Development of new e-Learning courses			

Training Update

SMETA Collaborative Training



3/5 sessions across 6 groups

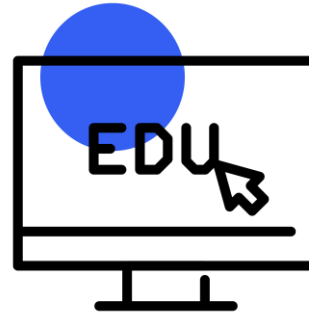


Almost 70 in-house trainers attending from 52 audit firms



100% of the respondents to a survey feedback have graded between 4-5 their overall satisfaction with the training

SMETA Auditor Academy development



We are working with an e-Learning provider to build 5 new modules for auditors on the new SMETA



We are currently aiming to finish the first module very soon – and it looks great!

Product update

- The implementation of New SMETA on the Sedex Platform has now started. Our key product focus is ensuring that all members can navigate through the new user journey with ease, whilst identifying opportunities to reduce time taken for audit reporting and providing useful insight for members.
- We conducted multiple user testing workshops with audit firms to gain feedback on the new designs before starting development. Feedback has been positive.
 - Auditors clearly understood what they needed to do and thought it would be simple to navigate.
 - AACs and Members have raised concerns about current PDF documents which will be addressed through the development of New SMETA.
- The introduction of Management Systems and Workplace Requirements will be launched in 2024, however members can expect enhancements to the audit user journey sooner as we are implementing changes iteratively. This will allow members to familiarise themselves with the new user journey before the official launch date.

Product update

- We will be organising research sessions with members in November on the following:
 - **CAPR & SMETA Report PDFs**
 - What information is most important in the summary to drive actions and next steps?
 - **Collaborative Actions**
 - How can we ensure members have the information they need to support Suppliers?
 - **Audit Action History**
 - Is it useful to see the history of an audit and actions taken at each stage?
 - **On-platform Insights**
 - What New SMETA data is most important to drive actions and next steps?

Outstanding question

- How to handle [open issues](#) in Periodic Audits undertaken in 6.1?

Options:

1. Most issue Titles are mapped so could be auto-filled and auto-identify their relevant WR – will need an additional solution regarding management systems related NCs and handful of defunct ITs.
2. New SMETA supersedes 6.1, and only issues identified on site are recorded
3. New SMETA supersedes 6.1, but auditors are provided the last report, so they can manually identify the correct WR and correct IT
4. Prioritise autofill or auditor manual fill of major, critical and business critical

Research

- Multi-site audits
 - How often do you request/ receive request for multi-site audit?
 - What is the nature of the requests?
- Virtual Assessment
 - How often do you request/ receive request for SVA?
 - What is the nature of the requests?



Questions?

Sedex 